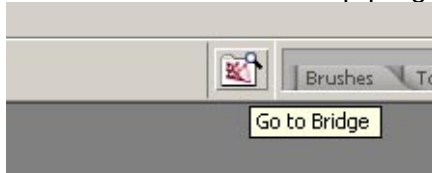
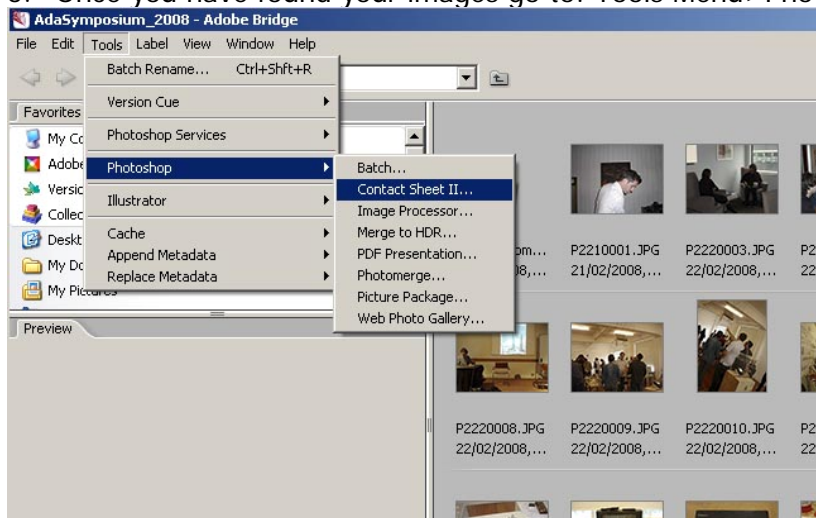


## Otago Polytechnic Adobe Photoshop | How to Make Contact Sheets of your images

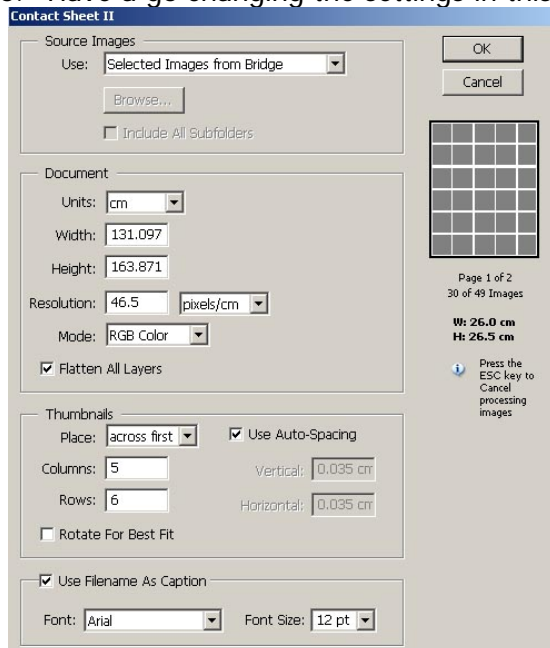
1. Ensure your images are all in one folder, and accessible on your computer
2. Open *Adobe Photoshop*
3. Click the FOLDER Icon on the top right of the tool bar – this takes you to a plug-in/associated Photoshop programme called *Bridge*



4. In *Bridge*, Navigate, or Browse to your folder of images
5. Once you have found your images go to: Tools Menu>Photoshop>Contact Sheet II



6. Have a go changing the settings in this box:



*Did you know?* – If you click on one of your images in "Bridge" you can see all of the metadata linked to that image; including the camera make and model that took the photograph.

Very handy to check back for the aperture and shutter speed that you used to take that image!

7. Photoshop will now go to work *for you*, creating your contact sheets!
8. Make sure you **SAVE** your contact Sheets.