

The Treaty Trail Worksheet

To complete the following worksheet, you will find answers in three ways:

Firstly, some answers will come from the Treaty Trail or displays by the Treaty Trail. You need to look for the green signs. These are part of the Treaty Trail and are marked on the museum map with a **T**. When a question can be answered from the Treaty Trail, it will be marked with the letter **T**.

Secondly, questions that are not on the trail will be marked with an **O**. You will receive hints as to where the answers to these questions are located.

Thirdly, some questions are from the Treaty of Waitangi Exhibit in the Māori Court. These will be marked with an **E**.

Location 1: Encounter Hall



1. **T** Find a wall with these paintings (and others). These paintings show several locations in Auckland where the Treaty was signed. Name two locations of Auckland signings.
 - i.
 - ii.

2. **T** How many years ago was the Treaty of Waitangi signed?

3. **T** What does the word Māori mean?

4. **O** Find the portrait of the Reverend Henry Williams. He was responsible for translating Te Tiriti, with the assistance of his son. What year did he arrive in New Zealand with his family?
.....

Location 2: Treaty of

Waitangi Exhibit

(Back wall of Māori Court)

Examine the timeline.



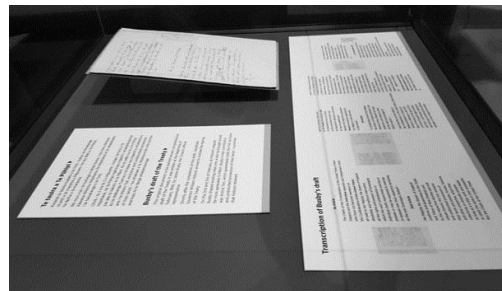
5. Using one of the interactive displays inside the exhibit, find information on the Declaration of Independence. Who organised the hui that led to the signing of the Declaration?

And, what date was the Declaration of Independence signed?

6. What were two aims of the Declaration of Independence?

.....
.....

7. Locate Busby's draft of the treaty. What was Busby's main contribution to the treaty text? The last paragraph of the information in the glass case gives you the answer.



.....

8. Find the following quote: "The task of a Treaty claim is, not only to talk with the crown about redressing those wrongs, but to bring the whānau and the hapū back together again." Who said this?

.....

9. Who is the kuia in this photo?

.....

Why is she important?

.....



Location 3: Māori Court

10. **T** The great waka in the Māori Court belonged to a very important chief. This chief had an important role in the signing of Te Tiriti. What was the name of this chief?

.....

11. **T** A famous chief, first to sign the Te Tiriti o Waitangi, was also famous for something that occurred in Kororāreka (Russell) in 1844. What was the name of the chief?

And, what was the event that occurred in 1844?

.....

12. **O** Close to the Māori Court, is a department called Te Awe. What is Te Awe? What work do they do?

.....
.....
.....



13. **O** What are the two crops growing in the gardens at Pā Taurira?

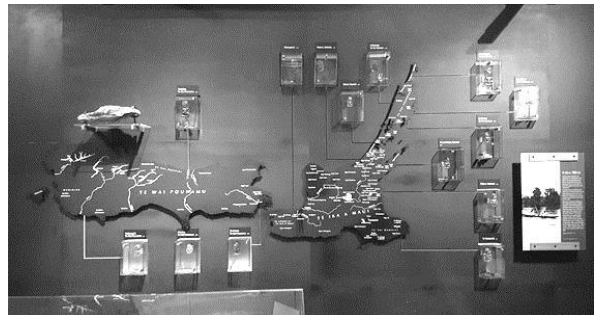
.....
.....



14. **O** Locate this display. What does it show?

.....
.....

TAKE A PHOTO OF YOUR GROUP AT THIS DISPLAY



RETURN THE COMPLETED WORKSHEET TO YOUR LECTURER – REMEMBER TO INCLUDE THE NAMES OF THE MEMBERS OF YOUR GROUP.